



JAN

PRESBYTERIAN WOMEN
Of Eastern Oklahoma Presbytery

2012



PW PURPOSE

Forgiven and freed by God in Jesus Christ, and empowered by the Holy Spirit, we commit ourselves

To nurture our faith through prayer and Bible study,

To support the mission of the church worldwide,

To work for justice and peace, and to build an inclusive, caring community of women

That strengthens the Presbyterian Church (U.S.A.) and witness to the promise of God's kingdom.

Newsletter Editor 2011

*Eveline Steele
P O Box 191
Broken Bow, OK 74728
Email: evesteele@yahoo.com*

Assistant Editor 2011

*Margaret Caldwell
8530 East 32nd Street
Tulsa, Oklahoma 74145-1540
Email: margaretcaldwell@att.net*

From the Moderator

Dear Presbyterian Women,

Like unfolding petals of a rose, God encourages us to open ourselves to the plans He reveals to us for our lives. As God nurtures us we are called to nurture one another.

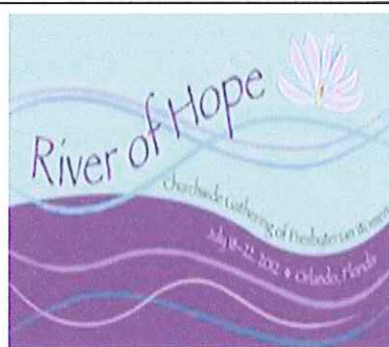
Through the 2012 Presbyterian Women Birthday Offering our own Synod of the Sun received a \$200,000 grant for Solar Under the Sun. One half of the grant money will be used to install solar panel equipment at Ferncliff Camp in Arkansas where Church Mission teams can be trained on installation techniques through a lens of mission partnerships. The other half of the grant will match funds for the purchase of solar panels and related hardware for projects in Haiti.

Presbyterian Women in Eastern Oklahoma Presbytery have many budding events in the up-coming months to nurture our faith. Please mark your calendars and plan to attend our March Cluster Meetings "Foundations of Hope": North – March 10 at First Presbyterian, Sand Springs; South – March 31 at First Presbyterian, Henryetta; and our Spring Gathering April 28 at Southminster Presbyterian, Tulsa. Our Churchwide Gathering "River of Hope" is July 18-22 at the Gaylord Palms Convention Center in Orlando, FL. Tentative dates and places have been set for our Fall Workshops. Let us take advantage of these exciting opportunities to share, grow, and blossom together.

Gratefully, I am *Greatly Honored*, loved, nurtured, and healthy. Some of our Presbyterian Women; however, are undergoing serious health issues. We cannot name all but entrust them to God's tender, loving care. Let us pray for The Great Physician's healing for them. In addition, please keep our Coordinating Team in your thoughts and prayers as we work together to plan events and fill vacancies on the PW Coordinating Team. If you are asked to accept a position to serve, please pray about it, and then say "Yes!" if Christ reveals His plan for you to serve Him through Presbyterian Women.

Christ's Grace and Peace, Sandra Hayes, Moderator, P W Eastern Oklahoma Presby.

Topic of Articles	Page
<i>PW Purpose</i>	1
<i>Note from the Moderator</i>	1
<i>From the Treasurer</i>	2
<i>Student Grants</i>	2
<i>Calendar of Events</i>	3
<i>Celebrate the Gifts of Women</i>	2
<i>Cluster Meetings</i>	3
<i>Spring & Churchwide Gathering</i>	3
<i>Dwight Women's Retreat</i>	3
<i>Synod PW Gathering 2013</i>	3



Note of Interest!

Mother's Day Project is received all year long. It supports health projects for women and children in Africa. The program supports preventive and healthcare services for women and children in Sudan, Malawi, Republic of Congo and Ethiopia.

Make plans to attend the 2012 Churchwide Gathering in Orlando, Florida, July 15-22.



EOP PRESBYTERIAN WOMEN

From the Treasurer regarding:

Student Grant Scholarships

Four student grant scholarships are given each year at Spring Gathering.

Donations are made by Presbyterian Women groups in churches as they choose to help young people seek college degrees.

Any amount is welcome to make this possible. Checks should be sent to Presbyterian Treasurer:

Carol McMasters
3800 W 71st
Tulsa, OK 74132

Birthday Offering

PW in the congregation usually collect this offering in the spring and dedicate their offerings at spring gatherings.

“Give as you are blessed.”

Make checks payable to treasurer of Presbyterian Women. Send check to PW Treasurer:

Carol McMasters
3800 W 71st
Tulsa, OK 74132

Student Grant Applications are due by March 1, 2012 (for 2012-2013 school year)

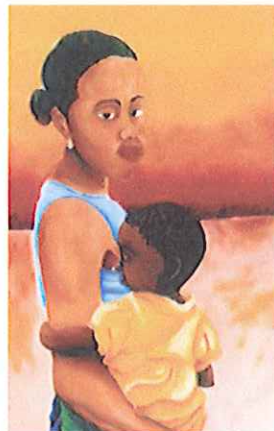
Send to: Barbara Mugge
3818 E. 76 St.
Tulsa, OK 74136

Lincoln Mitchell, one of our present recipients, sent this note:
“I’m having an amazing time at Yale, and it wouldn’t have been possible without your scholarship.”

Holly Geis, a former scholarship winner, sent this note:
“I graduated from Lyon College in May with a degree in International Business and am working at a bank in Little Rock. I even bought my first car. Your assistance was key to my success.

Please urge your students to apply to Presbyterian Women for scholarships.

Barbara
918)491-6495
bmugge@gmail.com



Celebrate the Gifts of Women
March 4, 2012

March 4, 2012, is Celebrate the Gifts of Women Sunday. This year the Celebrate the Gifts of Women resource “Honoring Stories of Courage, Struggle and Survival” is written by Frances Taylor Gench. It includes the following downloadable resources for a worship service: call to worship, prayer of confession, suggested hymns, suggested scripture readings, a litany of remembrance and renewal, preaching and program suggestions, and recommended resources for further study. Go online to www.pcusa.org/resource/celebrate-gifts-women-2012-liturgy/



CALENDAR OF EVENTS

Mark your calendars!

PWCT Meeting – John Calvin Presbyterian Church
31st & Memorial, Tulsa - February 18, 2012
11:30 am lunch
12:30 meeting

MARCH CLUSTER MEETING

Theme: Foundations of Hope

NORTH Cluster -- March 10, 2012
Sand Springs FPC -- Sand Springs, OK.

SOUTH Cluster -- March 31, 2012
Henryetta FPC -- Henryetta, OK.

- † Both Cluster Meetings will begin at 9:30 a.m.
- † Lunch will be provided at both host churches.
Please bring \$7.00 for Lunch.
- † There will be information concerning Churchwide Gathering at each Cluster Meetings.

PRESBYTERIAN WOMEN
2012 SPRING GATHERING
Registration at 9:30 a.m.

April 28, 2012

Southminster Presbyterian Church,
3500 S. Peoria Avenue
Tulsa, Oklahoma
(918)743-4427

More information is forthcoming after the February 18, 2012 PW Coordinating Team Meeting.

PLAN FOR CHURCHWIDE GATHERING JULY 18-22, 2012



GAYLORD PALMS RESORT
ORLANDO, FLORIDA

REGISTRATION AND SCHOLARSHIP INFORMATION AVAILABLE

Registration costs: \$440 before May 15, 2012 and \$480 after May 15, 2012.

Lodging will be at Gaylord Palms Resort, Orlando, FL. Check online for additional information at by calling 888/728-7228, ext. 8015. Or www.presbyterianwomen.org/gathering.

Online registration opens December 1, 2011 on this website. Only credit card payments will be accepted for online registrations. You will receive email confirmation of your online registration.

Registration by mail opens January 15, 2012.



Register by May 15, 2012, to save \$40 on full registration!

FALL WORKSHOPS

SOUTH: Durant FPC – August 11
NORTH: Tulsa FPC -- August 25

DWIGHT WOMEN'S RETREAT

September 22-23, 2012
Dwight Mission Conference Center
Vian, Oklahoma

Synod of the Sun
Presbyterian Women's Gathering
July 18-21, 2013
Grace Presbyterian Church
Houston, TX

Theme: Faith Endurance Wholeness

SEARCH COMMITTEE

Prayerfully complete the search committee form of suggested names of Presbyterian Women to serve on the Coordinating Team (CT) of Eastern Oklahoma. Four positions are open: Northeast Cluster Coordinator, Southeast Cluster Coordinator, Resources and Historian.

Elaine Dodd patriotic1970@yahoo.com 918)744-5830
Or 918)607-6508

Janis McKinney mckinneyjanis@yahoo.com 560)703-3082

Charlotte Pauley depauley@att.net 918)341-5557
Or 918)694-8554

PW FORMS to download are available on-line from the Presbytery office (eop@sbcglobal.net): Or from Cluster Coordinator and PWCT officers.

- Leader Development
- Student Grant/P.W. Scholarship Applications
- Honorary Life Membership
- Memorial and Recognition Gifts

CHANGE OF OFFICERS

Outgoing PW leaders-- please complete and submit change of officers form (from PW Packet) at your earliest convenience so that current information will get to the appropriate leadership person. Send your completed form to:

Marsha Evans
4790 South 4401
Pryor, OK 74361-9348.

If you have questions, call or email Marsha at:
(918)440-6617 or

Email: snavems@gmail.com

Presbyterian Women of
Eastern Oklahoma Presbytery
c/o Margaret Caldwell
8530 East 32nd Street
Tulsa, OK 74145-1540



Winter/February 2012